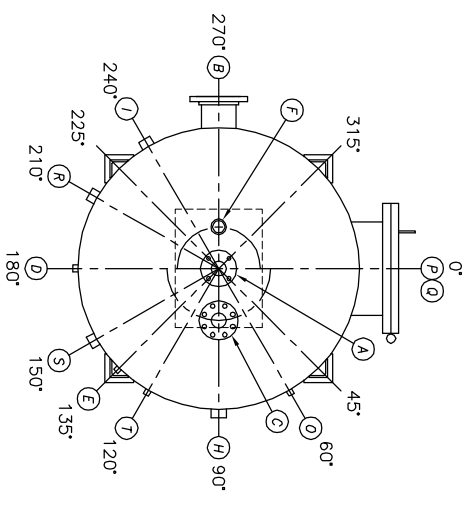
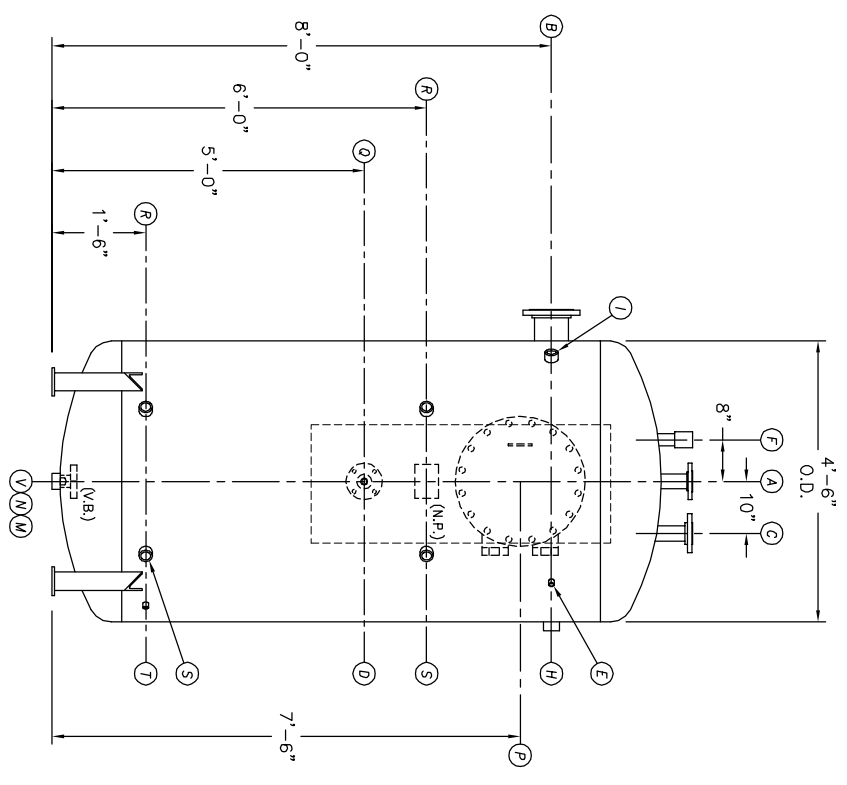


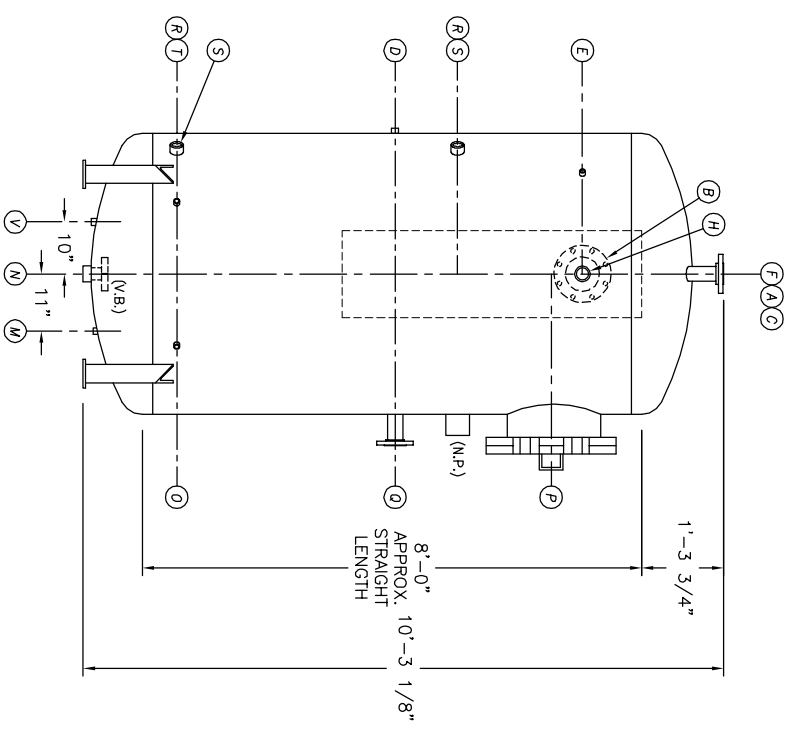
UMENT AND THE INFORMATION IT
HAVE BEEN FURNISHED FOR USE
BY OWN ORGANIZATION ONLY AND
FOR NO OTHER ORGANIZATION
PURPOSE CONSISTENT WITH THE
POLICY OF KANSAS CITY DEARATOR
CORPORATION. NO PART OF THIS
DRAWING SHALL BE REPRODUCED
OR TRANSMITTED IN ANY FORM
OR BY ANY MEANS, ELECTRONIC
OR MECHANICAL, INCLUDING
PHOTOCOPYING, RECORDING, OR
BY ANY INFORMATION STORAGE
AND RETRIEVAL SYSTEM, WITHOUT
THE WRITTEN PERMISSION OF
KANSAS CITY DEARATOR CO.,
OVERLAND PARK, KANSAS 66209



TOP VIEW



FRONT VIEW



END VIEW

- NOTES:**
- SEE CONNECTION SCHEDULE FOR NOZZLE DESCRIPTIONS.
 - STRAIGHT LENGTHS ARE APPROXIMATE. OVERALL LENGTH (OAL) IS TO BE HELD.
 - FOR MISCELLANEOUS DETAILS SEE MD DRAWINGS
 - DIMENSIONS ARE GIVEN FROM CENTER LINE OF TANKS TO NOZZLE CENTER LINE OR OUTSIDE FACE OF FLANGE.
 - G.B. = GRAB BAR
V.B. = VORTEX BREAKER
N.P. = NAME PLATE
F.S. = FAR SIDE
D.S. = DRIP SHIELD
N.S. = NEAR SIDE
T.B. = TEE BARFLE
CL = CENTER LINE

NOTE:
PUMP SUCTION NOZZLES
WILL BE ADDED TO MATCH
ANY PUMPS SUPPLIED BY KCD

| NO. | DATE | DESCRIPTION OF CHANGE |
|-----|------|-----------------------|
| - | - | - |
| - | - | - |
| - | - | - |

| | | | |
|----------------------------|-------|--------------------------|------|
| CLIENT: | | KANSAS CITY DEARATOR CO. | |
| DESIGNED | | DRAWN | |
| CHECKED | | DATE | |
| JOB # | SCALE | 1-8 | 1-8 |
| STD | NTS | MK | GENI |
| | | PC | 2004 |
| TITLE: GENERAL ARRANGEMENT | | | |
| MODEL: VTP32-4508-10 | | | |
| DWG. NO.: VTP032-4508-10 | | | |

KANSAS CITY DEARATOR CO.
6731 W. 121st STREET
OVERLAND PARK, KANSAS 66209
(913) 338-2111 FAX (913) 338-2144