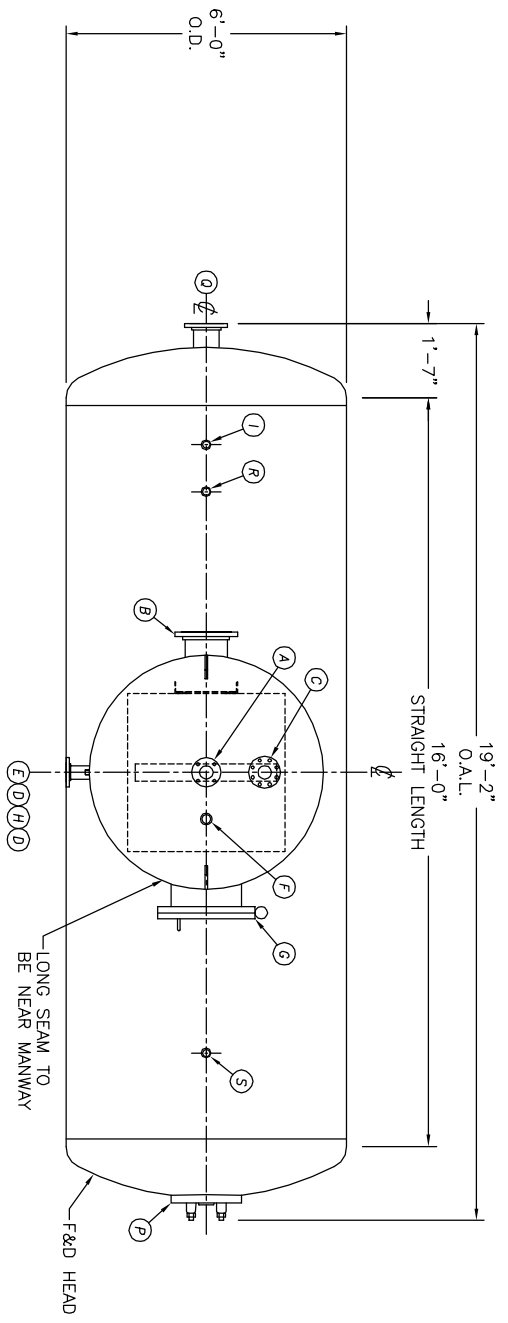


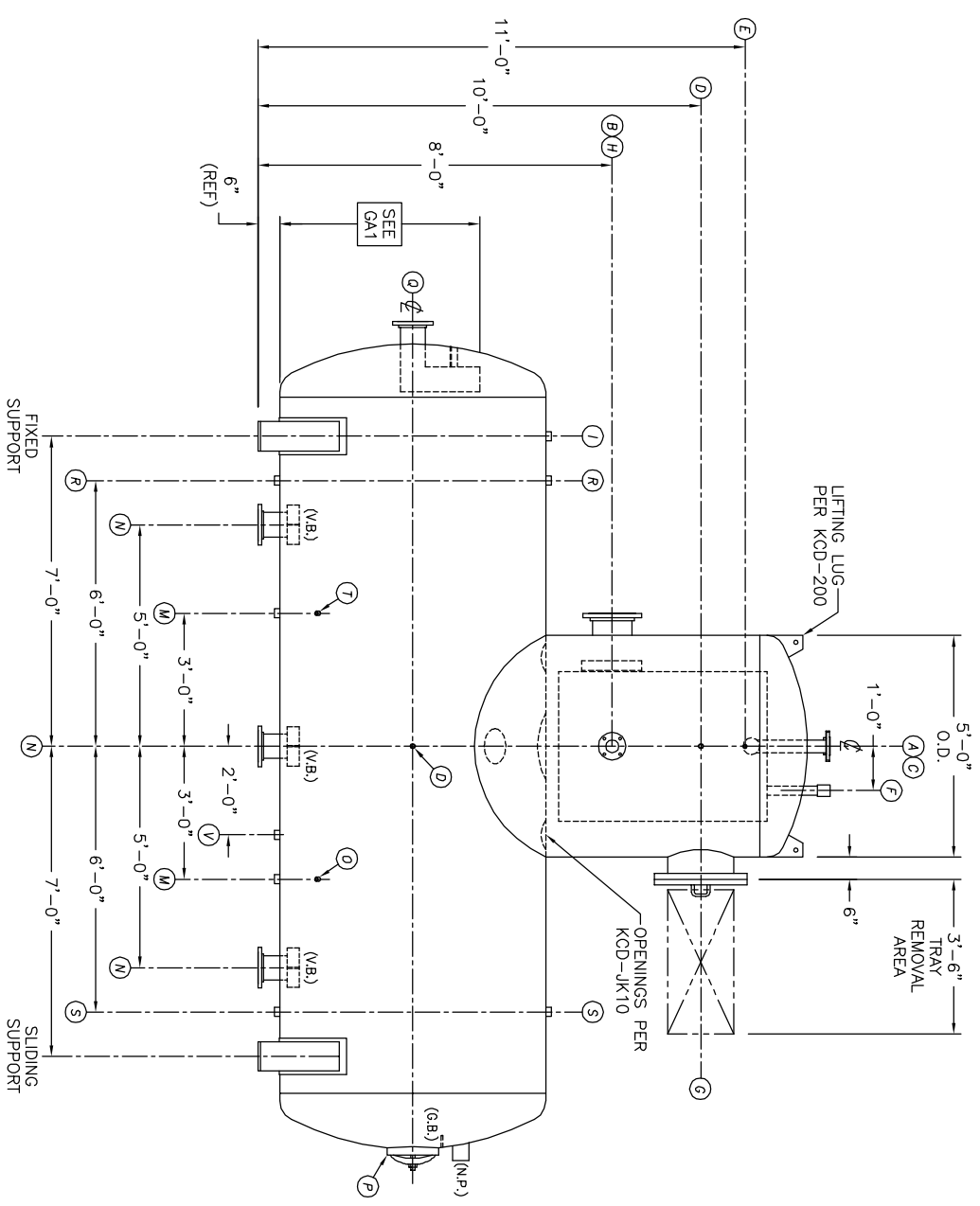
UMENT AND THE INFORMATION IT
HAVE BEEN FURNISHED FOR USE
BY YOUR OWN ORGANIZATION ONLY AND
FOR NO OTHER PURPOSE. IT IS THE
RESPONSIBILITY OF THE USER TO
VERIFY THE ACCURACY OF THE
INFORMATION ON BETWEEN YOUR ORGANIZATION
AND KANSAS CITY DEARATOR COMPANY.
IT SHALL BE FURNISHED TO ANY
PARTY WITHOUT THE WRITTEN
CONSENT OF KANSAS CITY DEARATOR CO.,
1400 OVERLAND PARK, KANSAS 66209



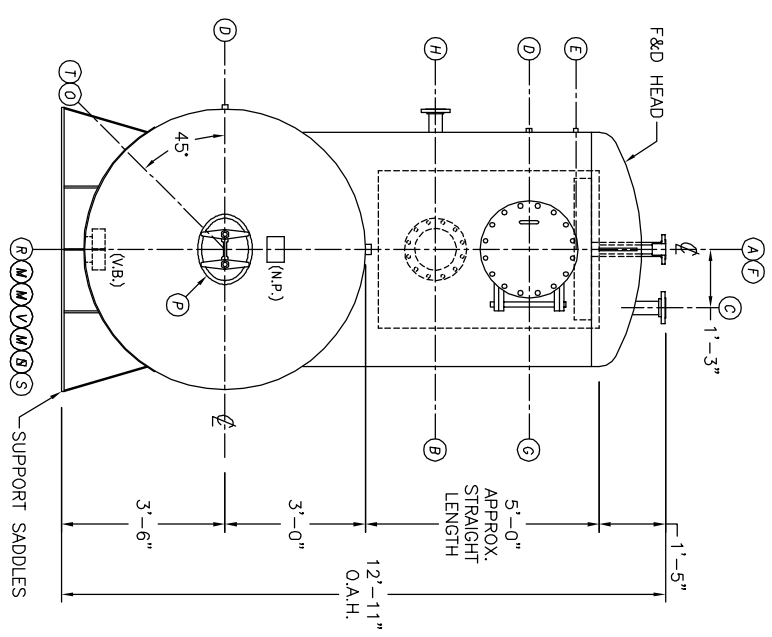
TOP VIEW

NOTE:
TURN ON/OFF
1-SUCT-GA2 IF YOU HAVE ONE SUCTION OR
2-SUCT-GA2-4 IF YOU HAVE TWO SUCTIONS
DEPENDING ON NEED. BEFORE USING THIS DRAWING
TURN OFF NOTE LAYER BEFORE USING THIS DRAWING.

- NOTES:**
1. SEE CONNECTION SCHEDULE FOR NOZZLE DESCRIPTIONS.
 2. STRAIGHT LENGTHS ARE APPROXIMATE. OVERALL LENGTH (OAL) IS TO BE HELD.
 3. FOR MISCELLANEOUS DETAILS SEE MD DRAWINGS
 4. DIMENSIONS ARE GIVEN FROM CENTER LINE OF TANKS TO NOZZLE CENTER LINE OR OUTSIDE FACE OF FLANGE.
 5. G.B. = GRAB BAR
V.B. = VORTEX BREAKER
N.P. = NAME PLATE
F.S. = FAR SIDE
- D.S. = DRIP SHIELD
N.S. = NEAR SIDE
T.B. = TEE BAFFLE
C.L. = CENTER LINE



FRONT VIEW



END VIEW

NOTE:
PUMP SUCTION NOZZLES
WILL BE ADDED TO MATCH
ANY PUMPS SUPPLIED BY KCD

NO.	DATE	DESCRIPTION OF CHANGE
-	-	-
-	-	-
-	-	-

CLIENT:
KANSAS CITY DEARATOR CO.
6731 W. 121st STREET
OVERLAND PARK, KANSAS 66209
(913) 338-2111 FAX (913) 338-2144

JOB #	SCALE	DESIGNED	DRAWN	CHECKED	DATE	UTD
STD	NTS	MK	GENI	PC	6-16 2004	6-16 2004

TITLE: **GENERAL ARRANGEMENT**

MODEL: TCP149-6016

DWG. NO.: **TCP149-6016**