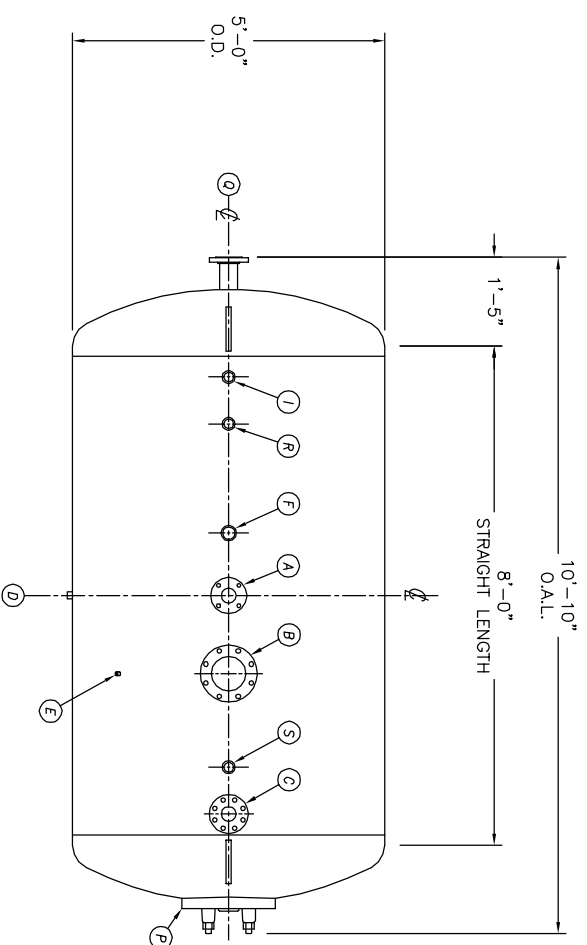
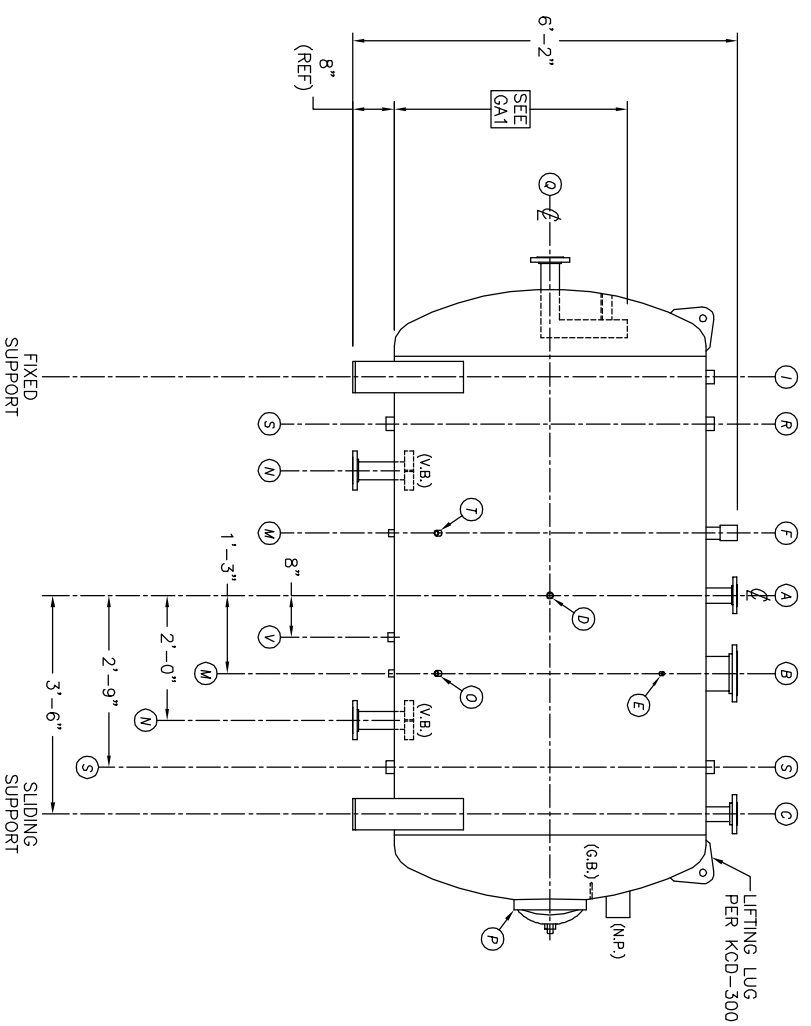


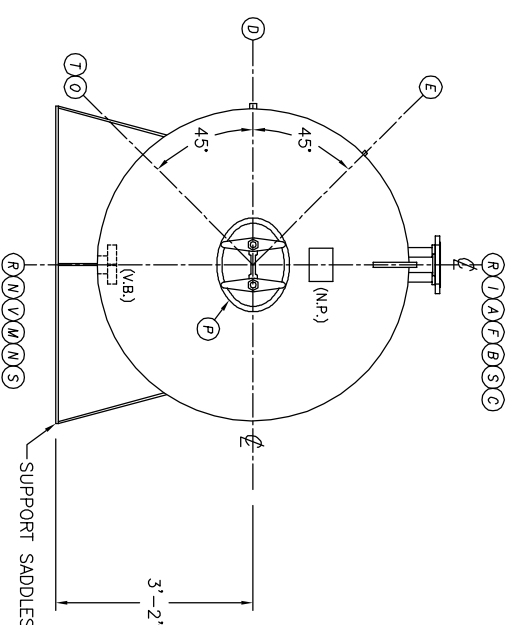
- NOTES:**
- SEE CONNECTION SCHEDULE FOR NOZZLE DESCRIPTIONS.
  - STRAIGHT LENGTHS ARE APPROXIMATE. OVERALL LENGTH (OAL) IS TO BE HELD.
  - FOR MISCELLANEOUS DETAILS SEE MD DRAWINGS
  - DIMENSIONS ARE GIVEN FROM CENTER LINE OF TANKS TO NOZZLE CENTER LINE OR OUTSIDE FACE OF FLANGE.
  - G.B. = GRAB BAR  
V.B. = VORTEX BREAKER  
N.P. = NAME PLATE  
F.S. = FAR SIDE
- D.S. = DRIP SHIELD  
N.S. = NEAR SIDE  
T.B. = TEE BATTLE  
CL = CENTER LINE



**TOP VIEW**



**FRONT VIEW**



**END VIEW**

**NOTE:**  
PUMP SUCTION NOZZLES  
WILL BE ADDED TO MATCH  
ANY PUMPS SUPPLIED BY KCD

UMENT AND THE INFORMATION IT  
HAVE BEEN FURNISHED FOR USE  
BY OWN ORGANIZATION ONLY AND  
NOT BE LOANED, REPRODUCED,  
OR COPIED IN ANY MANNER  
WITHOUT THE WRITTEN  
CONSENT OF KANSAS CITY  
DEAERATOR CO.,  
12111 PARK, KANSAS 66209

NO.	DATE	DESCRIPTION OF CHANGE
-	-	-
-	-	-
-	-	-

CLIENT:		KANSAS CITY DEAERATOR CO.	
JOB #		STD	
SCALE	DESIGNED	DRAWN	CHECKED
NTS	MK	GENI	PC
DATE	DATE	DATE	UTD
2003	2003	2003	2003
TITLE: GENERAL ARRANGEMENT			
MODEL: HS5008			
DWG. NO.: HS5008			

KANSAS CITY DEAERATOR CO.  
6731 W. 121st STREET  
OVERLAND PARK, KANSAS 66209  
(913) 338-2111 FAX (913) 338-2144

DESIGNED: MK  
DRAWN: GENI  
CHECKED: PC  
DATE: 6-11-2003  
UTD: 6-11-2003

DATE: 6-11-2003